

#terminalurbano

Padua Airport: where aviation meets art and events

The Gino Allegri Airport in Padua is a historic landmark for Venetian aviation, originally established as a military base and later transformed into a significant local civilian airport. Strategically located just a short distance from the city center, the airport boasts a long tradition linked to flight and innovation. Today, the airport opens up to new perspectives, becoming a multifunctional center ready to host cultural, corporate, and social events in a unique and evocative setting, thus adding an event offering to an already thriving and well-established activity.



Why organize an event in an airport setting

- Unique location: Gino Allegri Airport offers an exceptional setting where history and modernity converge. Events hosted here benefit from an exclusive atmosphere that is hard to replicate elsewhere.
- Logistical ease: Proximity to the center of Padua and direct access to major roads make the airport easily reachable, both for organizers and attendees.
- Versatile spaces: From refined and functional indoor spaces to large open outdoor areas, the variety of available environments allows for hosting events of all types and sizes, offering customized solutions.
- Connection with culture and social life: The project to open the airport to culture and social engagement creates a unique opportunity for innovative and participative events in a setting that brings together art, history, and community.



Proposed usable spaces



A large parking area adjacent to the airport offers great logistical convenience for event attendees. With dedicated spaces for both cars and shuttles, it enables smooth management of visitor flows, facilitating event organization with moderate attendance.



Inside Plaza

Plaza In addition to its internal rooms, the Padua Gino Allegri Airport also offers a spacious outdoor plaza, perfect for hosting a wide range of outdoor events. Whether for concerts, corporate parties, gatherings, or private celebrations, the large outdoor area is ideal for creating unique and engaging atmospheres. Thanks to its strategic location and flexible dimensions, the plaza can be customized to accommodate events of various types and sizes, ensuring an unforgettable experience for all participants.



Immelmann Space (Terminal)

The indoor space, named "Immelmann Space" in honor of the aerial acrobatic maneuver, is a flexible and modular environment, perfect for art exhibitions, conferences, and corporate meetings. The modern and well-equipped structure makes Immelmann Space an ideal venue for various types of events, offering the possibility to customize setups and create an immersive experience for participants.

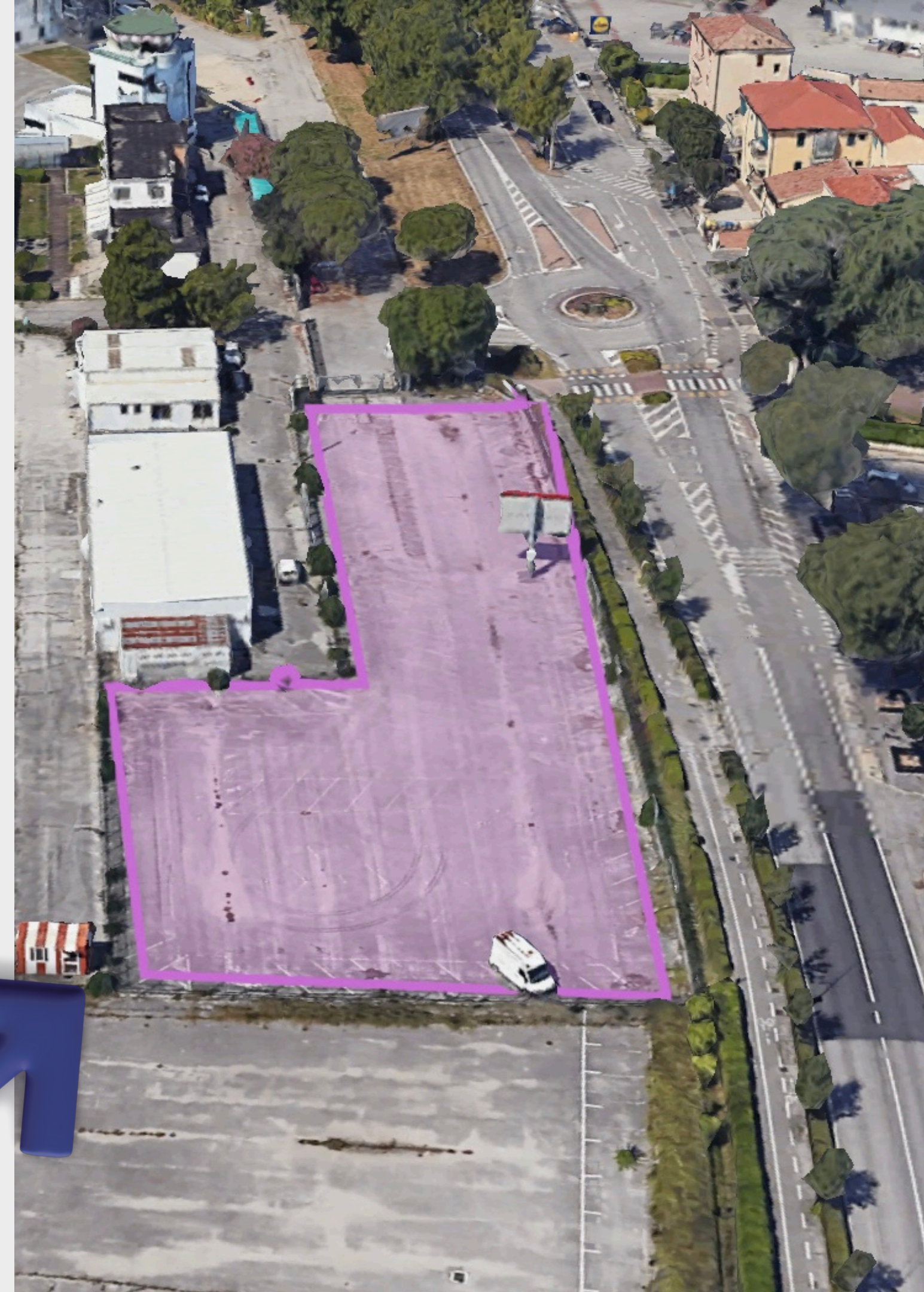


— SPAZIO —
IMMELMANN
INSIDE PADUA AIRPORT



Roadside Area

The main entrance to the airport, directly visible from Via Sorio, one of the busiest roads in Padua, represents an area of great visibility. This space is ideal for markets, temporary exhibitions, artistic installations, and advertising initiatives, ensuring excellent visibility to the public. Thanks to the high vehicle and pedestrian traffic along Via Sorio, activities organized here have the opportunity to attract the attention of a large number of passersby, increasing engagement potential.



Hangar

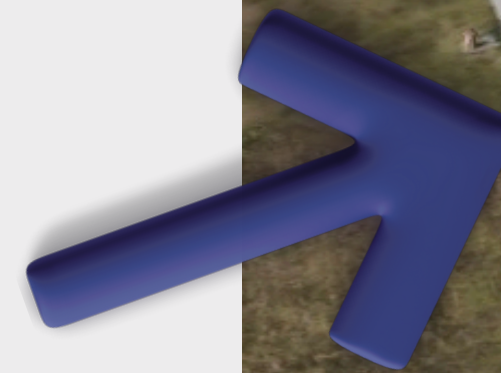
The airport hangar, with its spacious and industrial structure, is suitable for large-scale events such as concerts, temporary exhibitions, or private events. The charm of aeronautical architecture and its large capacity make it a versatile and evocative space, perfect for events requiring ample space.

*under renovation until 2026



Former Military Green Space

The green area, once a military zone, now opens up to new possibilities of use. Perfect for outdoor events such as festivals, markets, sports events, or ceremonies, this area retains the charm of its history, blending into a tranquil and natural setting. Ideal for those wishing to organize activities in a relaxing and spacious environment.



Outdoor Green Space

Space In addition to the outdoor plaza, the Padua Gino Allegri Airport has a welcoming green space located outside the terminal, ideal for hosting markets, artisan exhibitions, or more intimate outdoor events. This green corner offers a relaxing and natural atmosphere, perfect for creating a cozy and evocative environment for visitors, while retaining the versatility to accommodate various initiatives.



For information, contact us.



Powered by



Heron Air
Air Support and Technical Services



events@airportpadova.com



[@airportpadova](https://www.instagram.com/airportpadova)



0039-3477871565



www.airportpadova.com

